

INSIDE LOOK: THE NCIDQ EXAM DEVELOPMENT PROCESS



To ensure the NCIDQ Examination is valid, fair, and reliable, The Council for Interior Design Qualification (CIDQ) complies with guidelines and standards published in The Standards for Educational and Psychological Testing. CIDQ works with a professional testing company that specializes in developing certification and licensure exams throughout the entire test-development and administration process.

1 PRACTICE ANALYSIS



During the [practice analysis](#), a panel of interior design experts defines the overall practice areas and distinct tasks, knowledge, and skills required to validate competency.

Nearly 800 practicing interior designers review and rate the areas and tasks according to level of importance.



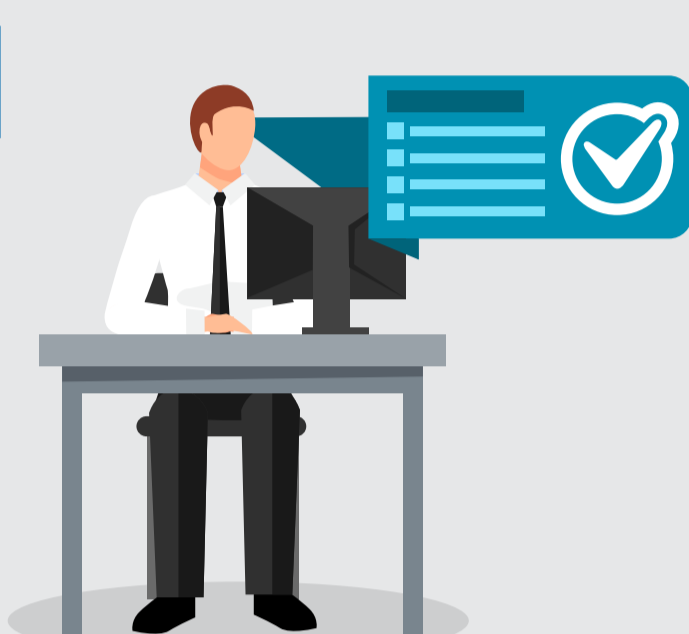
2 DEVELOPING A TEST BLUEPRINT



Based on the practice analysis, we develop an [exam blueprint](#), which determines the relative weight of each practice area or task and the number of corresponding questions.

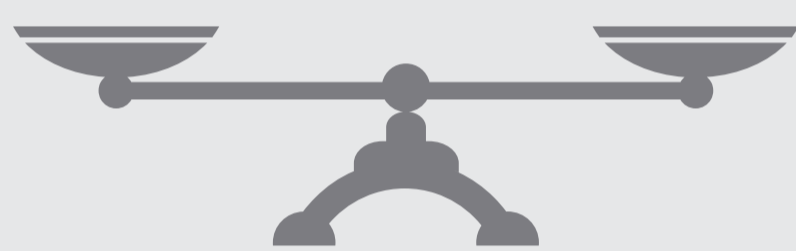
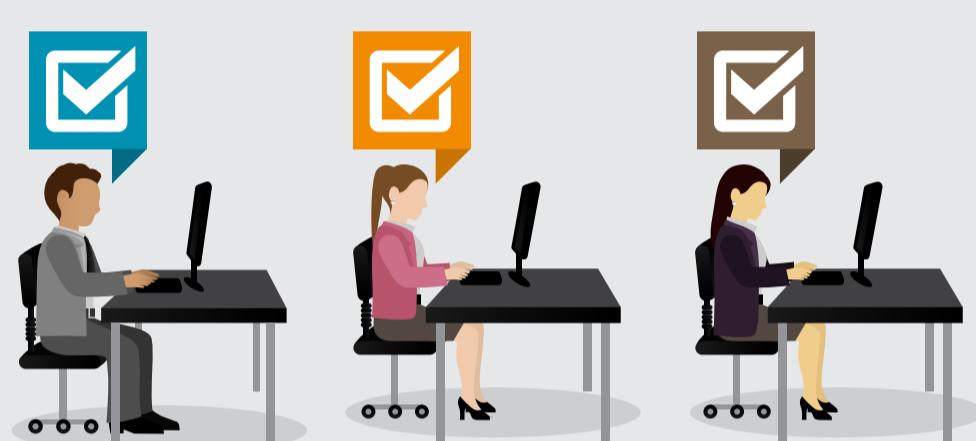
3 QUESTION DEVELOPMENT AND VALIDATION

Exam questions are [written and reviewed](#) by NCIDQ certificate-holding subject matter experts, who are trained in exam development best practices.



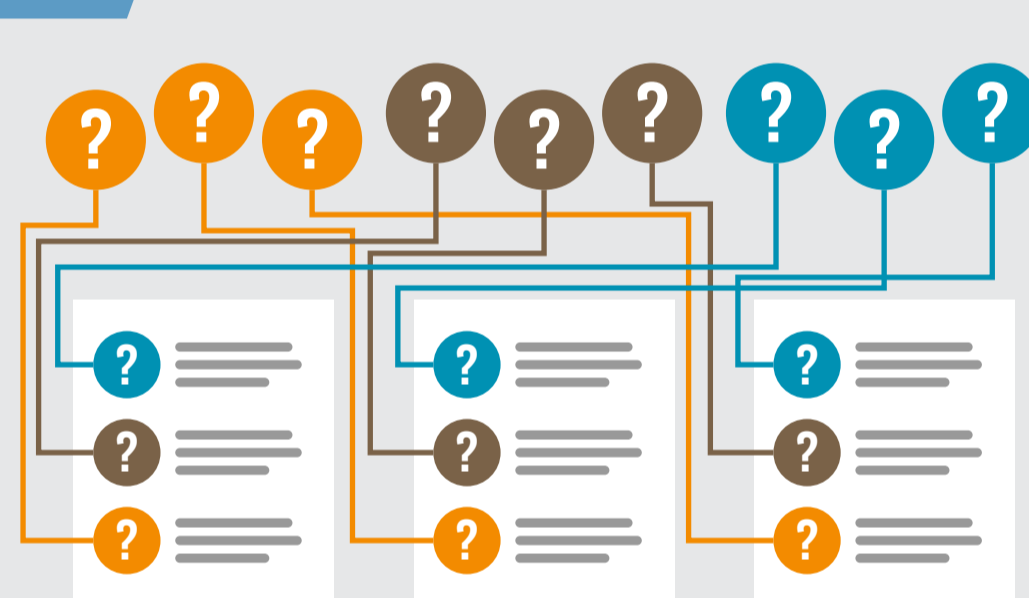
4 PRETESTING EXAM QUESTIONS

CIDQ pretests all questions before including them as scored items on the exam. Pretest results are analyzed statistically to ensure the quality and reliability of the overall exam.



CIDQ uses a leveling procedure to ensure that one test is not harder or easier than another.

5 EXAMINATION ASSEMBLY



For each exam administration, an appropriate number of questions from each content area is selected from pretested questions as specified in the test blueprint.

A committee of NCIDQ-certified exam reviewers works with testing experts to ensure maximum quality and an appropriate mixture of content.

6 REVIEW AND REVISION

The draft exams are again reviewed by the committee for technical accuracy and by testing experts to ensure process integrity.



7 PASSING SCORE

CIDQ works with our testing consultant to determine the defensible, criterion-referenced [passing score](#).

The passing point allows CIDQ to validate an interior designer's ability to practice independently in a manner that protects public health, safety, and welfare.



8 TEST ADMINISTRATION



Specific, consistent processes are in place for admitting candidates into the exam room, using highly trained personnel to verify identity, provide security, allot test times, etc.

Testing facilities must meet CIDQ guidelines for security, proper room size, ventilation, restroom facilities, accessibility, and noise control.

9 PSYCHOMETRIC ANALYSIS

After each exam administration, CIDQ conducts systematic analysis studies to ensure the proper function of each question and of the test as a whole.

Psychometric analysis evaluates the quality of the exam using extensive reliability analysis and other studies.



Council for
Interior Design
Qualification

» LEARN MORE

225 Reinekers Lane, Suite 210
Alexandria VA 22314
202.721.0220
inquiries@cidq.org
www.cidq.org

